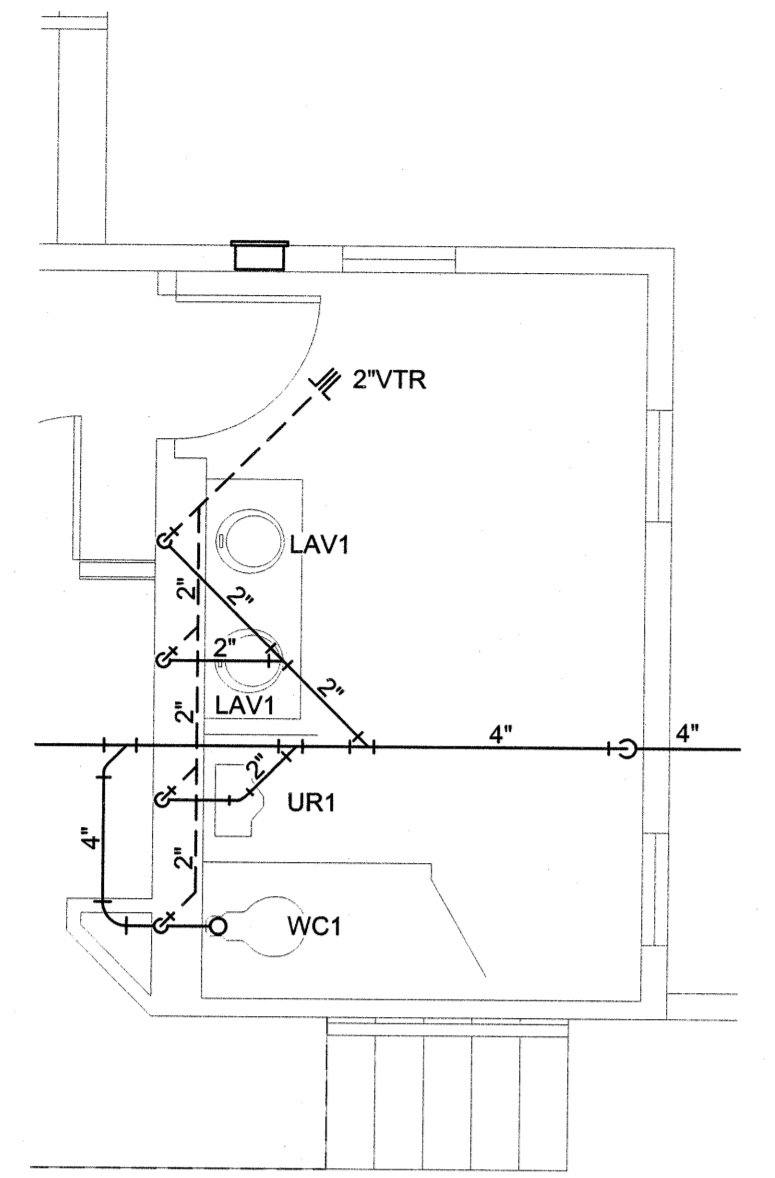
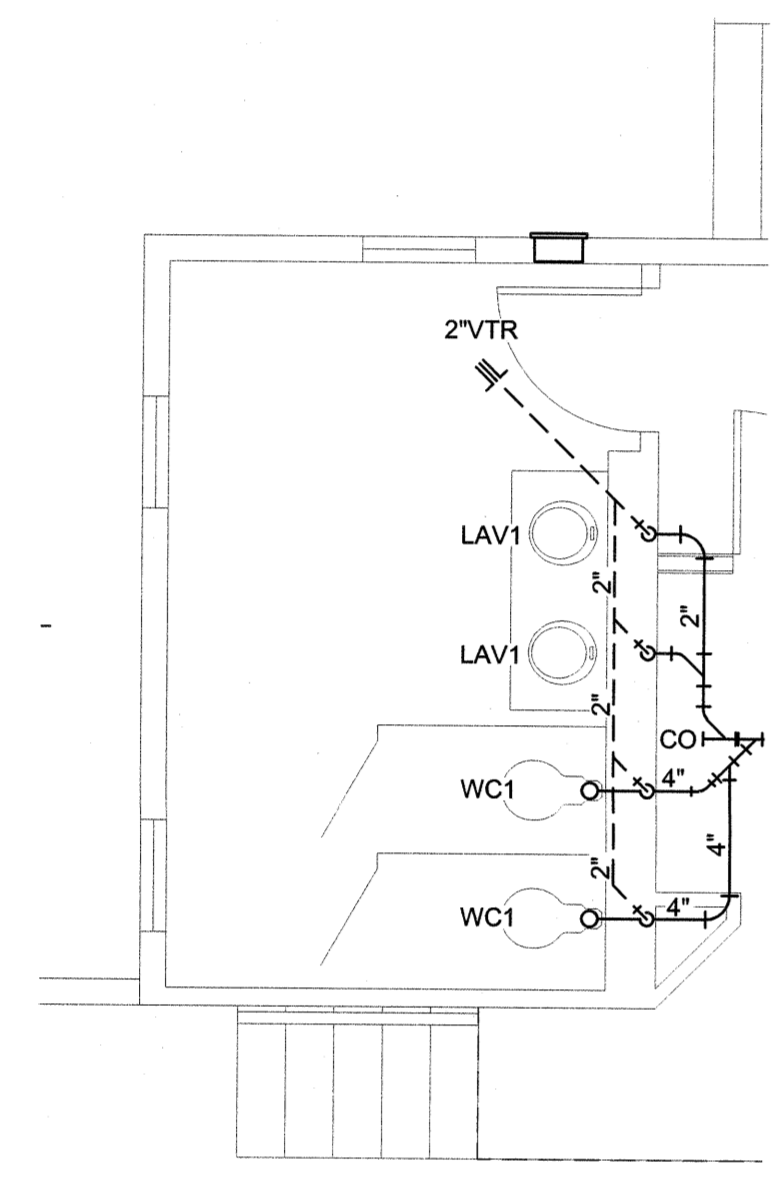


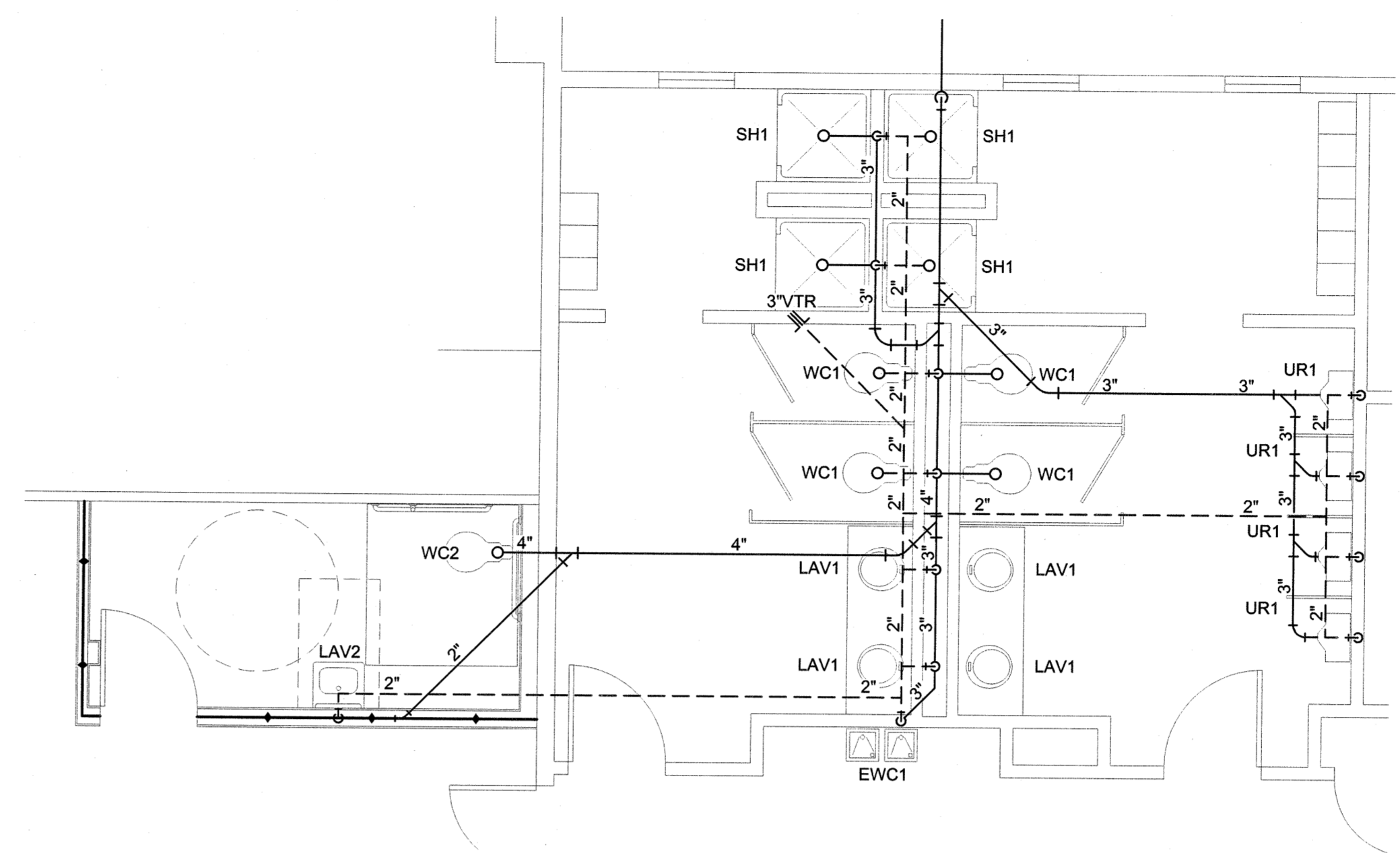
REVISIONS		
SYM.	DATE	APPROVED



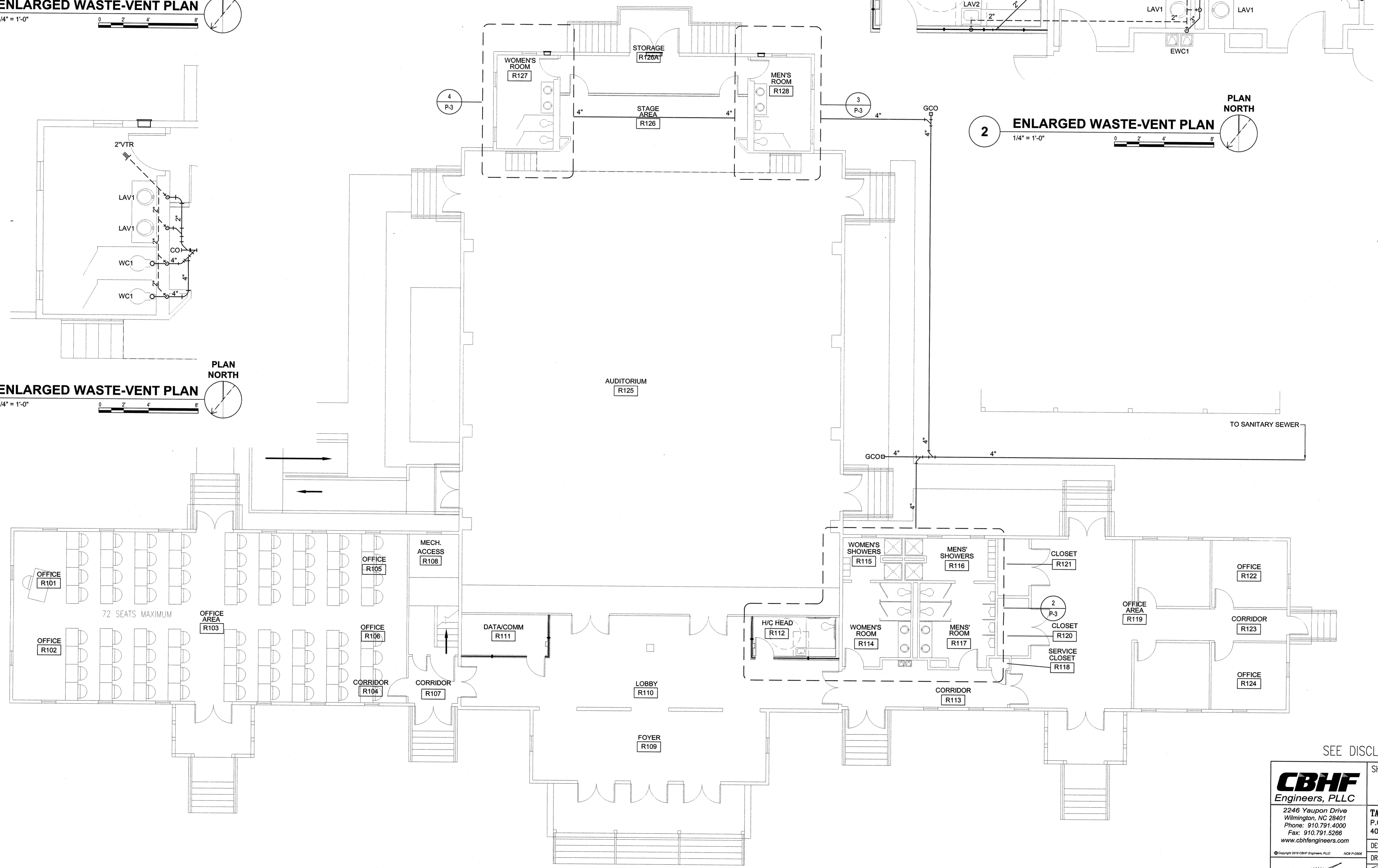
3 ENLARGED WASTE-VENT PLAN
1/4" = 1'-0"



4 ENLARGED WASTE-VENT PLAN
1/4" = 1'-0"



2 ENLARGED WASTE-VENT PLAN
1/4" = 1'-0"



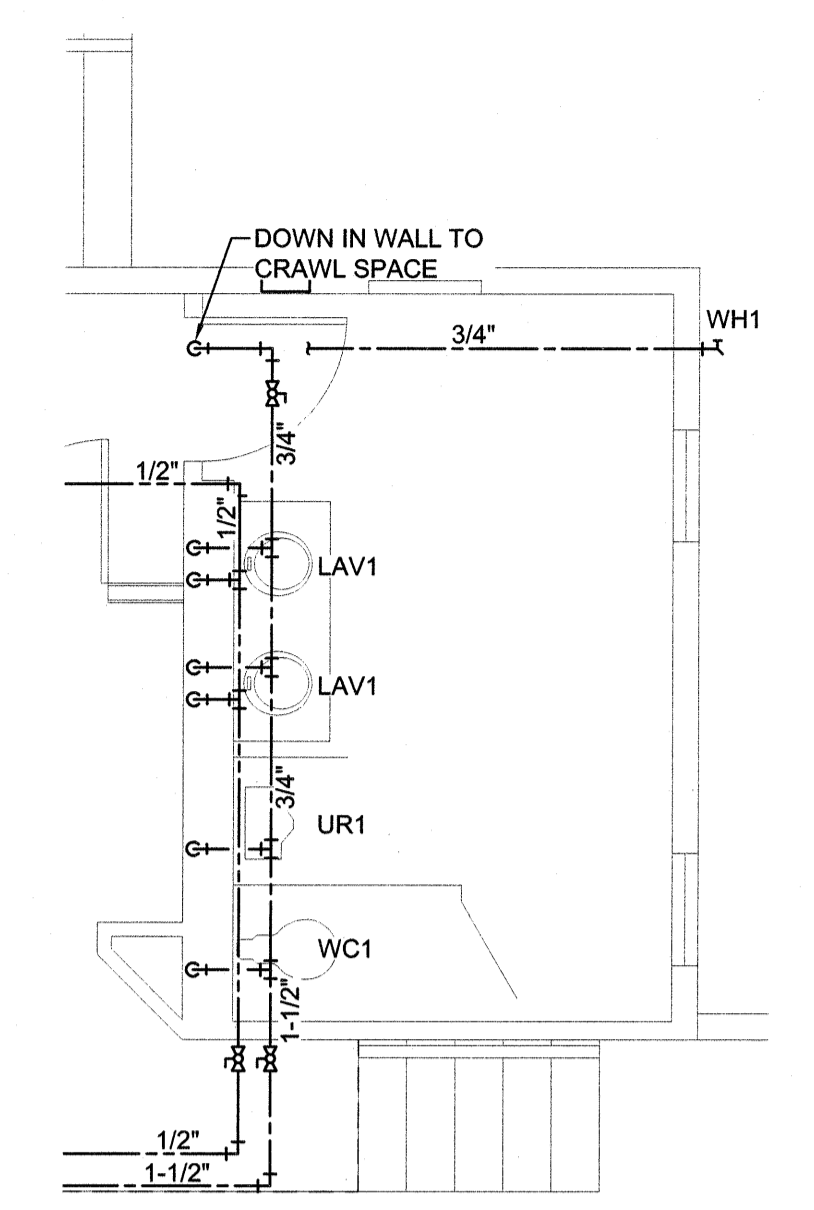
1 FIRST FLOOR WASTE-VENT PLAN
1/8" = 1'-0"

SEE DISCLOSURE OF INFORMATION STATEMENT ON SHEET T-1

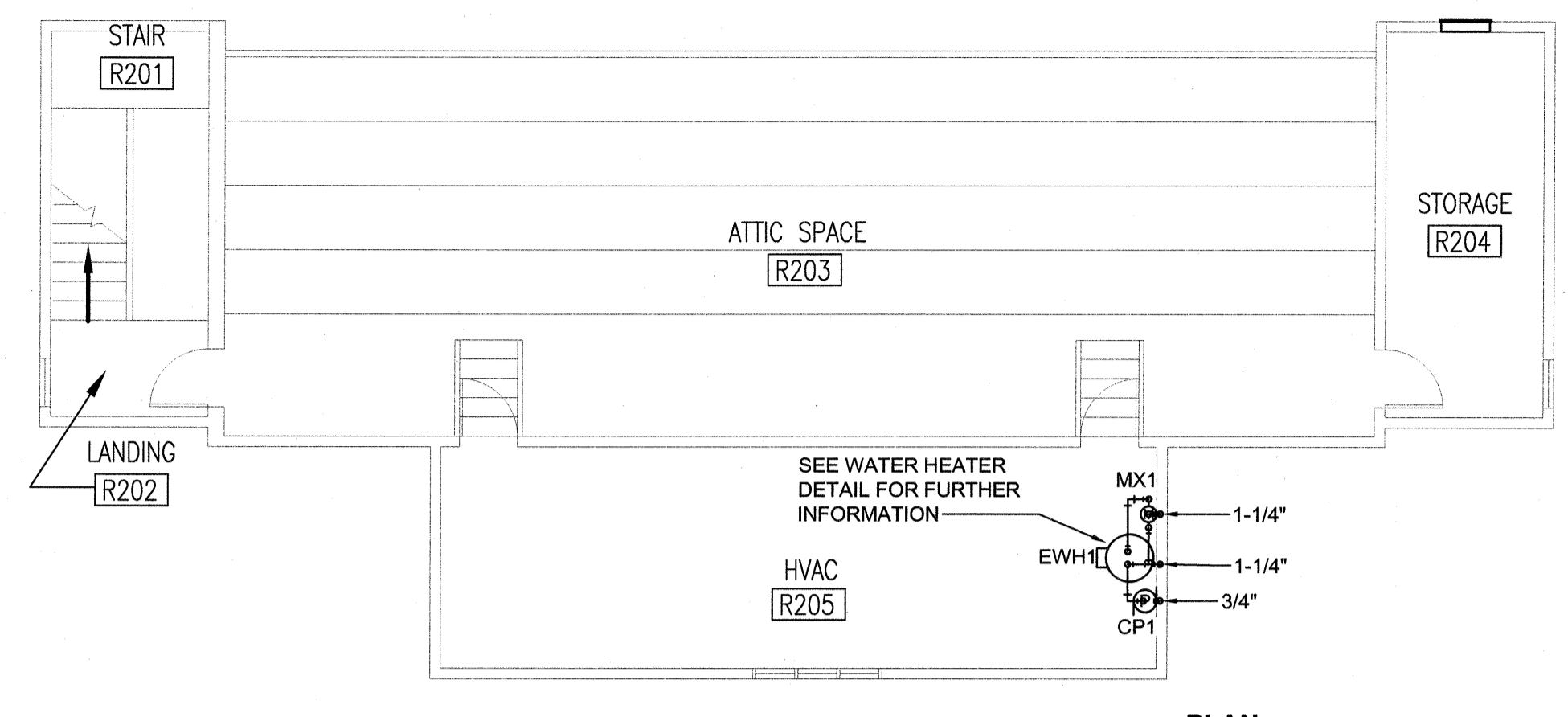
<p>2246 Yaupon Drive Wilmington, NC 28401 Phone: 910.791.4000 Fax: 910.791.5266 www.cbhfenr.com</p>	SHEET TITLE: PLUMBING WASTE-VENT FLOOR PLAN		<p>P-3</p>
	<p>TALLEY & SMITH ARCHITECTURE INC. P.O. BOX 518 SHELBY, NC 28151-0518 409 EAST MARION ST. SHELBY, NC 28150</p>		
	DES. JBS	RENOVATION	
	DR. JBS	BLDG. M-104	
	CHK. TOG	CAMP LEJEUNE, NORTH CAROLINA	
	SUBMITTED BY:		
DESIGN DIR. T. H. BURTON, PE	APPROVED:	DATE:	SIZE: F
			CODE IDENT. NO. 80091
			NAVFAC DRAWING NO. 60025130
SATISFACTORY TO:	DATE:	SCALE: NOTED	SPEC. 05-19-0034
			SHEET 32 OF 57

05/28/2019

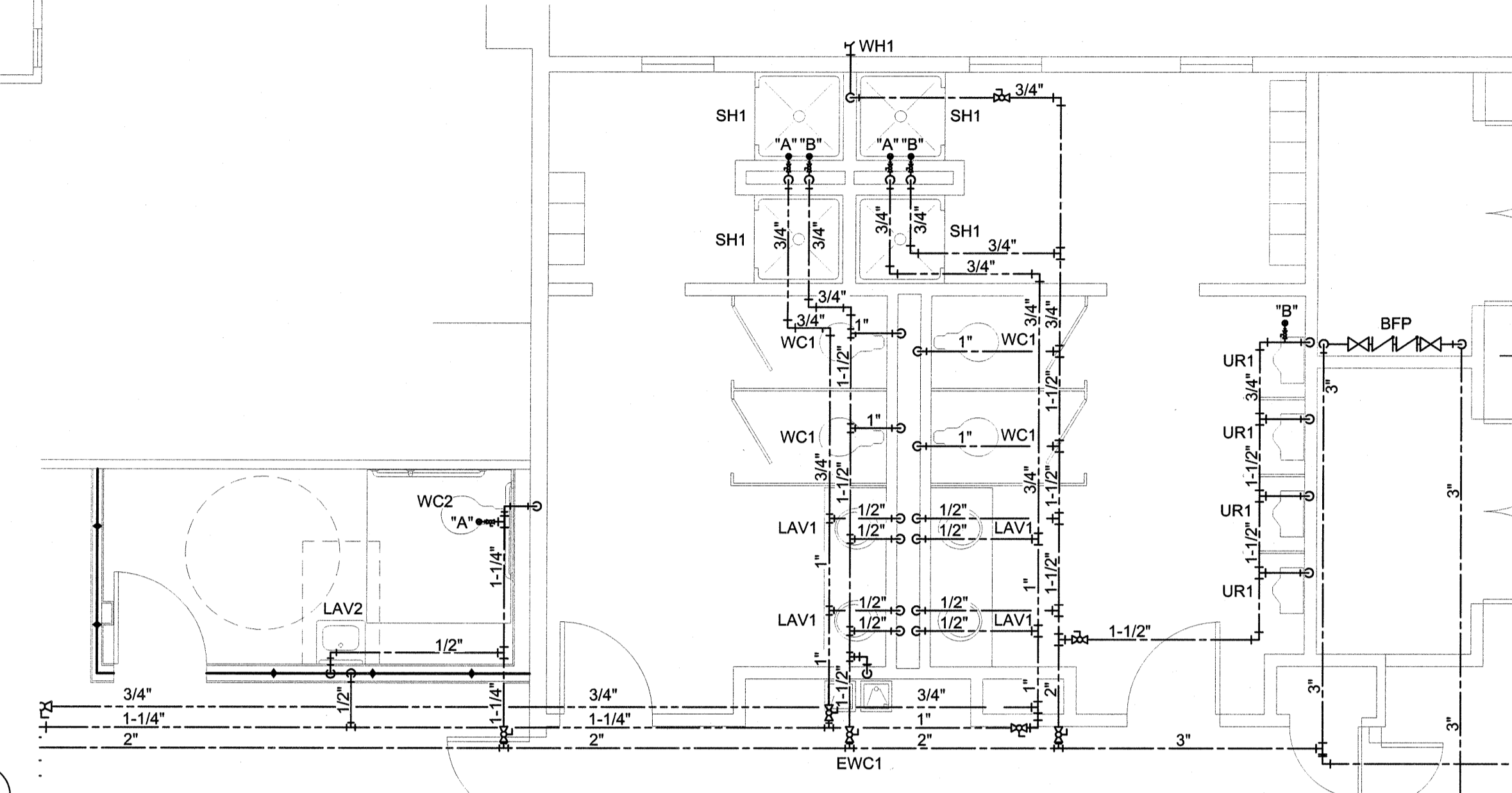
REVISIONS		
SYM.	DATE	APPROVED



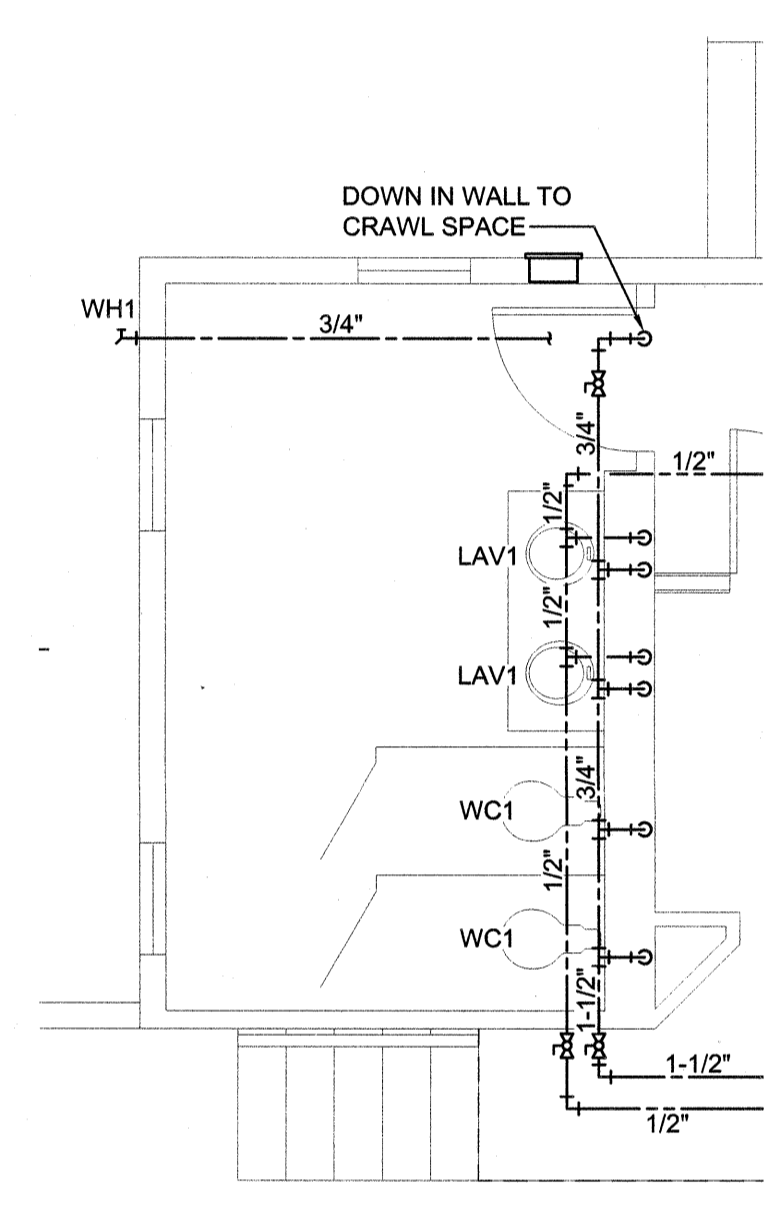
4 ENLARGED DOMESTIC WATER PLAN
1/4" = 1'-0"



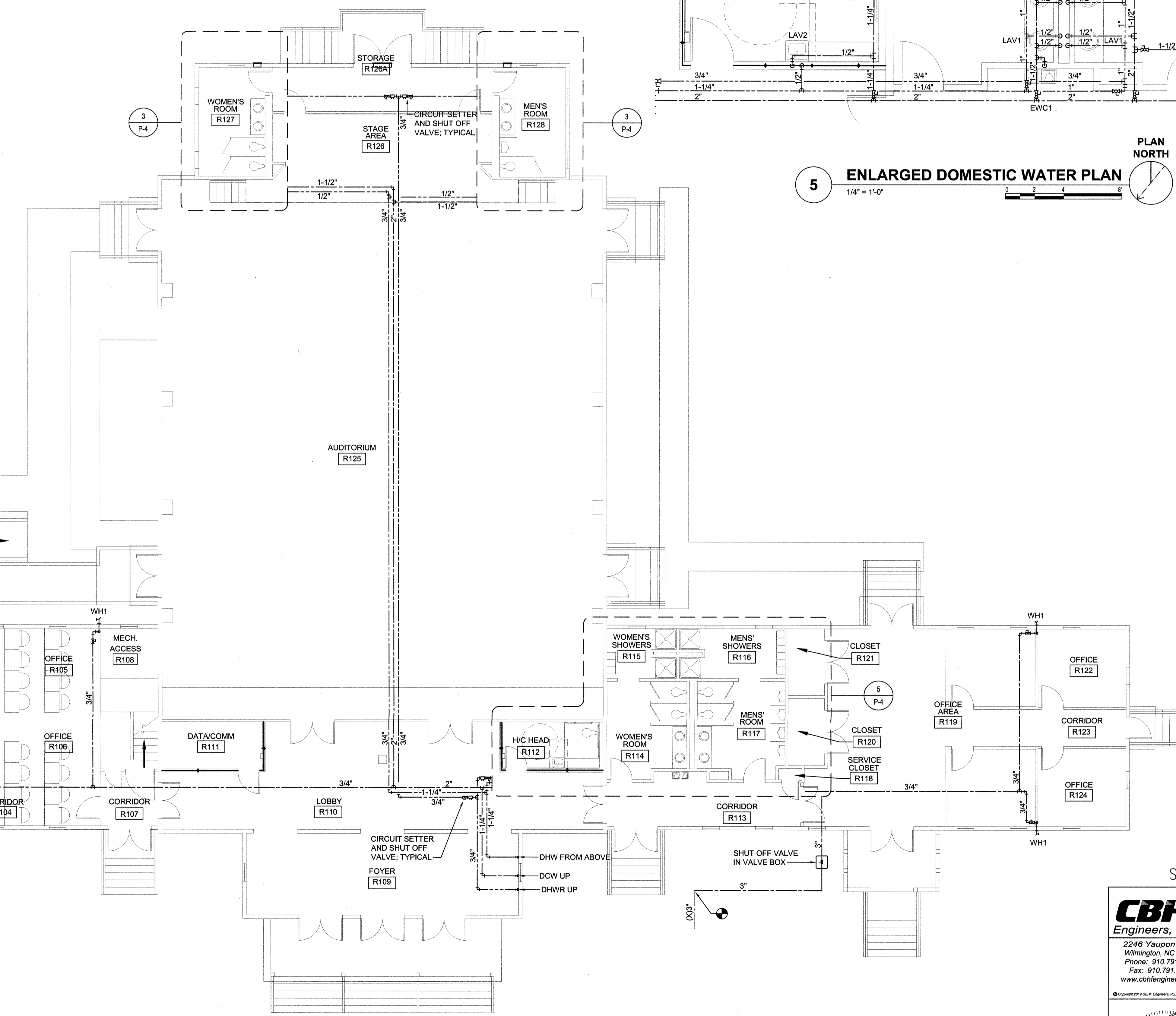
2 MEZZANINE DOMESTIC WATER PLAN
1/8" = 1'-0"



5 ENLARGED DOMESTIC WATER PLAN
1/4" = 1'-0"



3 ENLARGED DOMESTIC WATER PLAN
1/4" = 1'-0"

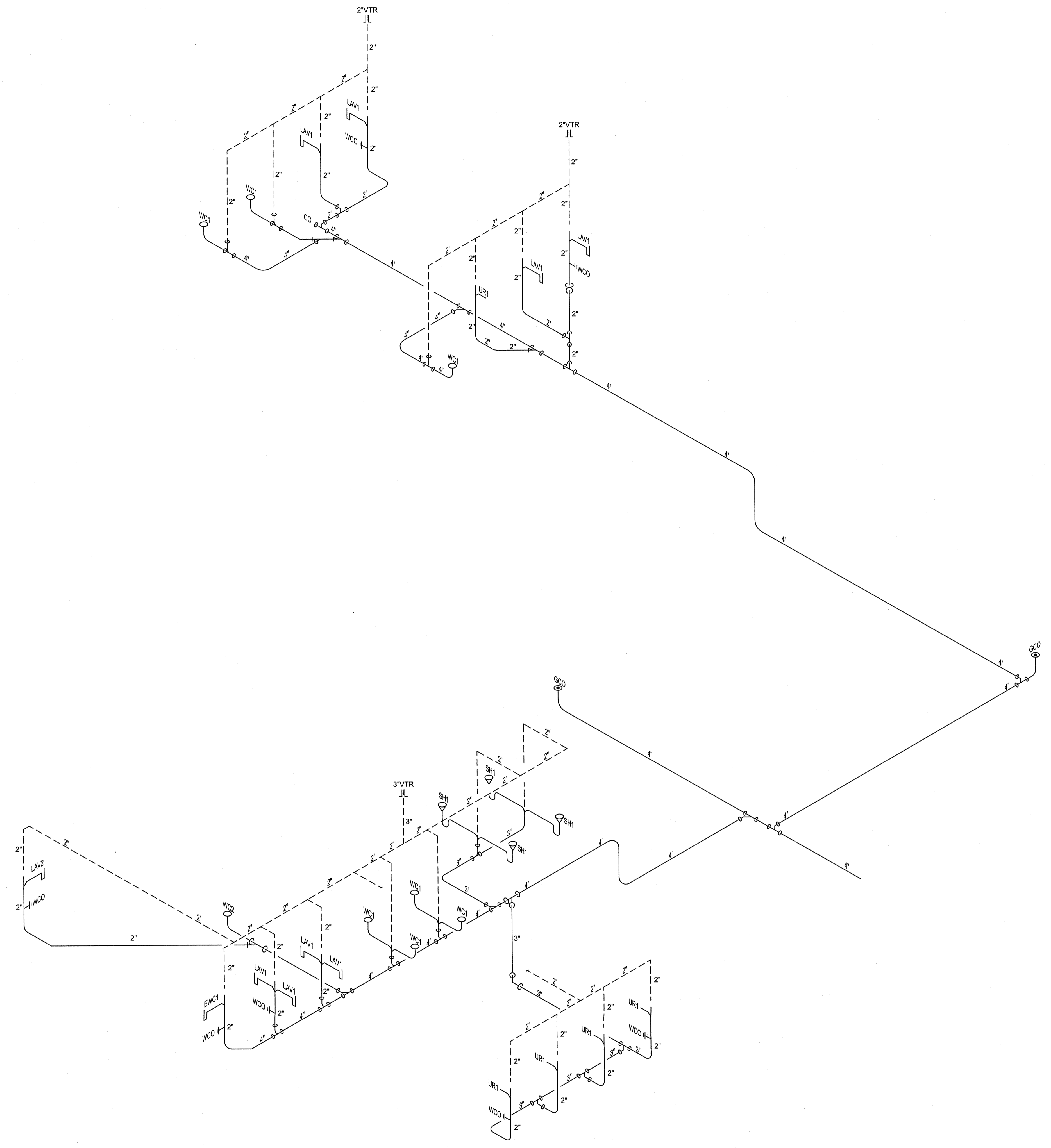


1 FIRST FLOOR DOMESTIC WATER PLAN
1/8" = 1'-0"

SEE DISCLOSURE OF INFORMATION STATEMENT ON SHEET T-1

CBHF Engineers, PLLC 2248 Yaucoon Drive Wilmington, NC 28401 Phone: 910.791.4000 Fax: 910.791.5266 www.cbhfindesign.com	SHEET TITLE: PLUMBING DOMESTIC WATER FLOOR PLAN		P-4
	TALLEY & SMITH ARCHITECTURE INC. P.O. BOX 518 SHELBY, NC 28151-0518 409 EAST MARION ST. SHELBY, NC 28150		
DEPARTMENT OF THE NAVY MARINE CORPS BASE CAMP LEJEUNE, NORTH CAROLINA		RENOVATION BLDG. M-104 CAMP LEJEUNE, NORTH CAROLINA	
DES. JBS CHK. TOG SUBMITTED BY: DESIGN DIR. T. H. BURTON, PE	APPROVED:	DATE:	SIZE: F CODE IDENT. NO.: 80091 NAVFAC DRAWING NO.: 60025131 CONST. CONTR. NO.: M4005-19-B-0034
SATISFACTORY TO:	DATE:	SCALE: NOTED	SPEC: 05-19-0034 SHEET 33 OF 57

REVISIONS		
SYM.	DATE	APPROVED

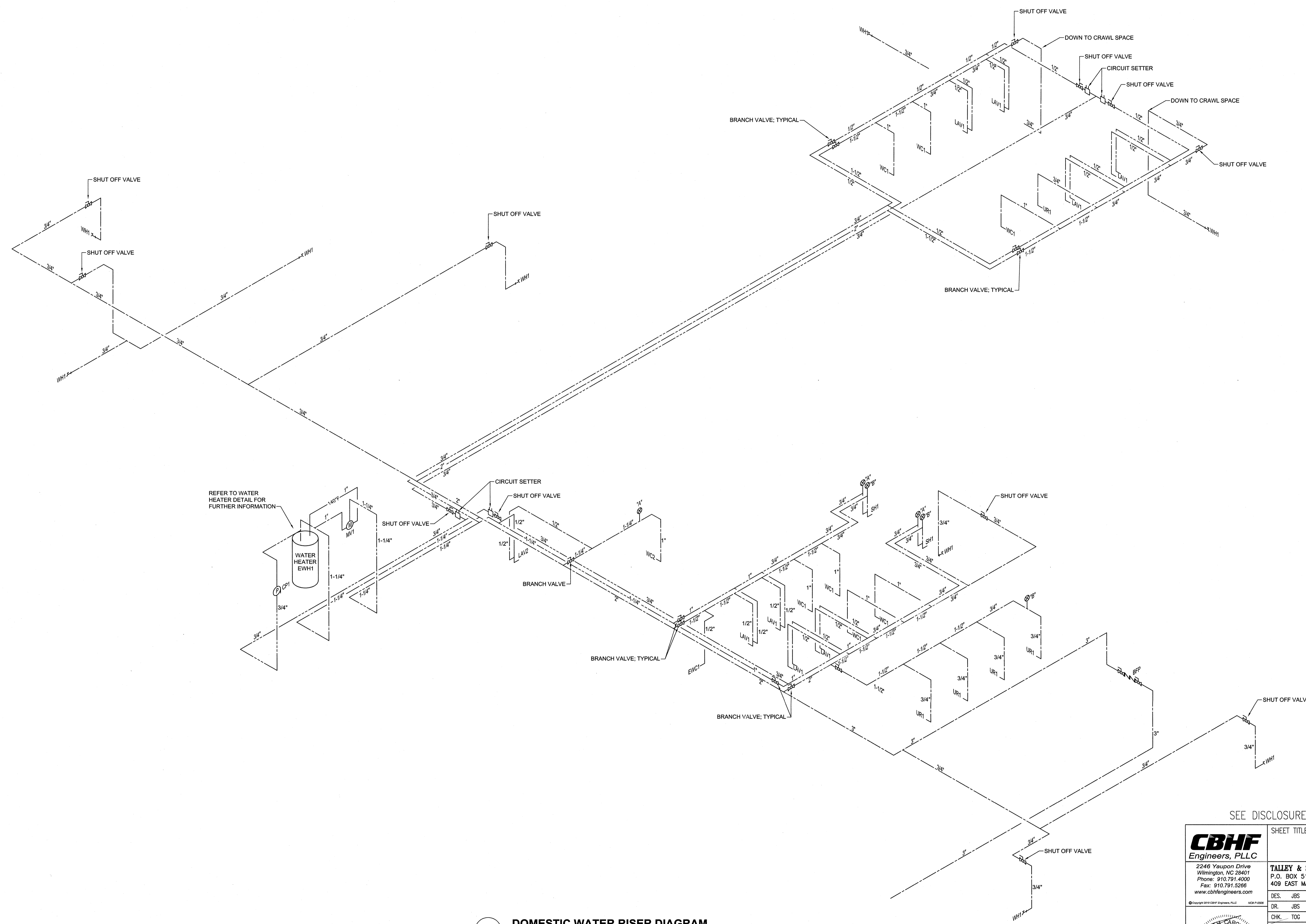


1 WASTE-VENT RISER DIAGRAM
NOT TO SCALE

SEE DISCLOSURE OF INFORMATION STATEMENT ON SHEET T-1

CBHF Engineers, PLLC 2246 Yeupon Drive Wilmington, NC 28401 Phone: 910.791.4000 Fax: 910.791.5268 www.cbhfenr.com	SHEET TITLE: PLUMBING WASTE-VENT RISER DIAGRAM		P-5
	DES. JBS DR. JBS CHK. TOG SUBMITTED BY: DESIGN DR. T.H. BURTON, PE		
	TALLEY & SMITH ARCHITECTURE INC. P.O. BOX 518 SHELBY, NC 28151-0518 409 EAST MARION ST. SHELBY, NC 28150		DEPARTMENT OF THE NAVY MARINE CORPS BASE CAMP LEJEUNE, NORTH CAROLINA
	APPROVED: _____ DATE: _____ SATISFACTORY TO: _____ DATE: _____		RENOVATION BLDG. M-104 CAMP LEJEUNE, NORTH CAROLINA
SIZE: F CODE IDENT. NO.: 80091	NAWFAC DRAWING NO.: 60025132 CONST. CONTR. NO.: N40085-19-8-0034	SCALE: NOTED SPEC: 05-19-0034	SHEET 34 OF 57

REVISIONS		
SYM.	DATE	APPROVED

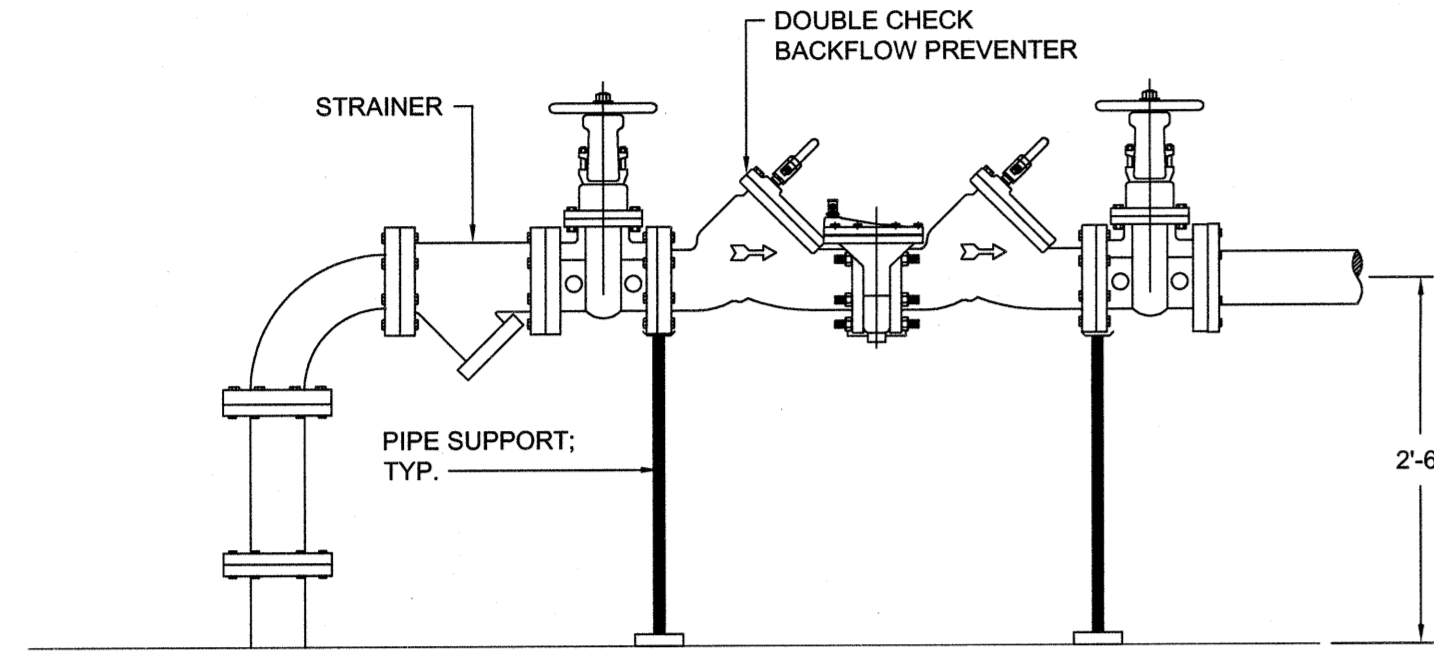


1 DOMESTIC WATER RISER DIAGRAM
NOT TO SCALE

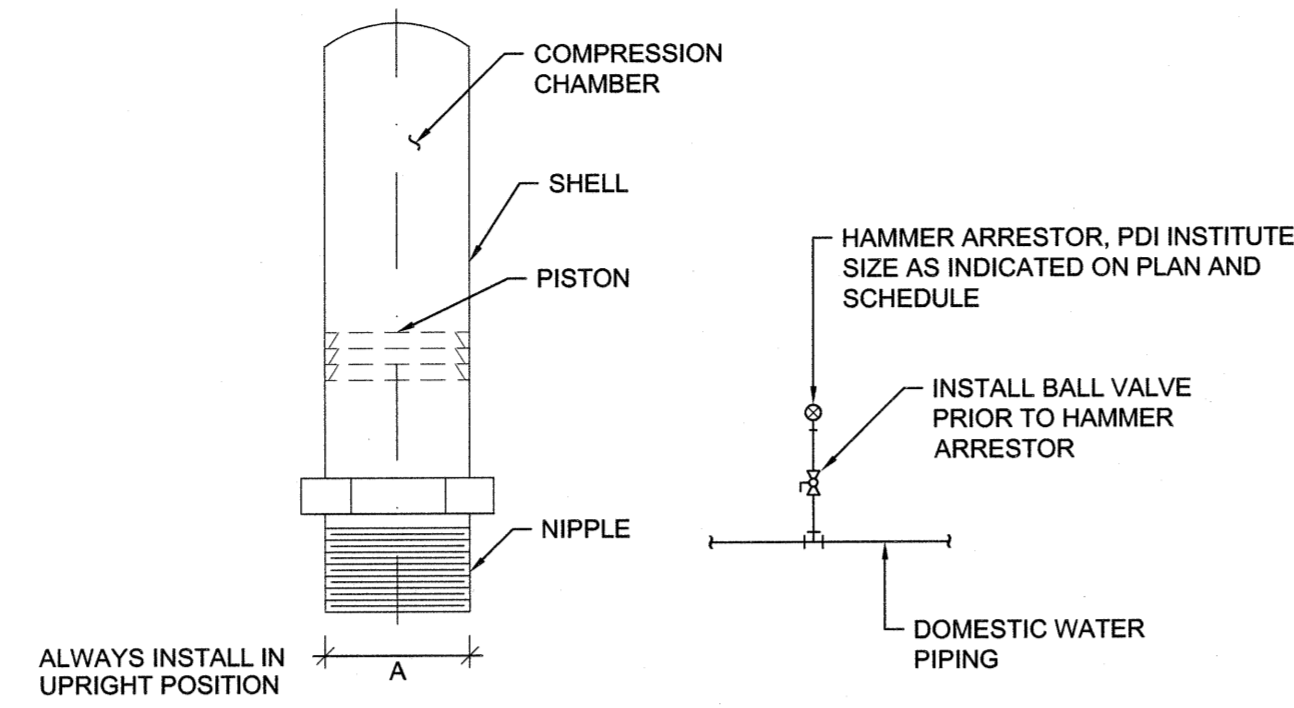
SEE DISCLOSURE OF INFORMATION STATEMENT ON SHEET T-1

CBHF Engineers, PLLC 2248 Yaupon Drive Wilmington, NC 28401 Phone: 910.791.4000 Fax: 910.791.5298 www.cbhfindesign.com	SHEET TITLE: PLUMBING DOMESTIC WATER RISER DIAGRAM		P-6
	TALLEY & SMITH ARCHITECTURE INC. P.O. BOX 518 SHELBY, NC 28151-0518 409 EAST MARION ST. SHELBY, NC 28150		
DES. JBS DR. JBS CHK. TOG SUBMITTED BY:		DEPARTMENT OF THE NAVY MARINE CORPS BASE CAMP LEJEUNE, NORTH CAROLINA	
DESIGN DIR. T. H. BURTON, PE		RENOVATION BLDG. M-104 CAMP LEJEUNE, NORTH CAROLINA	
APPROVED:	DATE:	SIZE: F	CODE IDENT. NO.: 80091
SATISFACTORY TO:	DATE:	NAVFAC DRAWING NO.: 60025133	CONST. CONTR. NO.: N40085-19-9-0034
SCALE: NOTED		SPEC.: 05-19-0034	SHEET 35 OF 57

REVISIONS		
SYM.	DATE	APPROVED

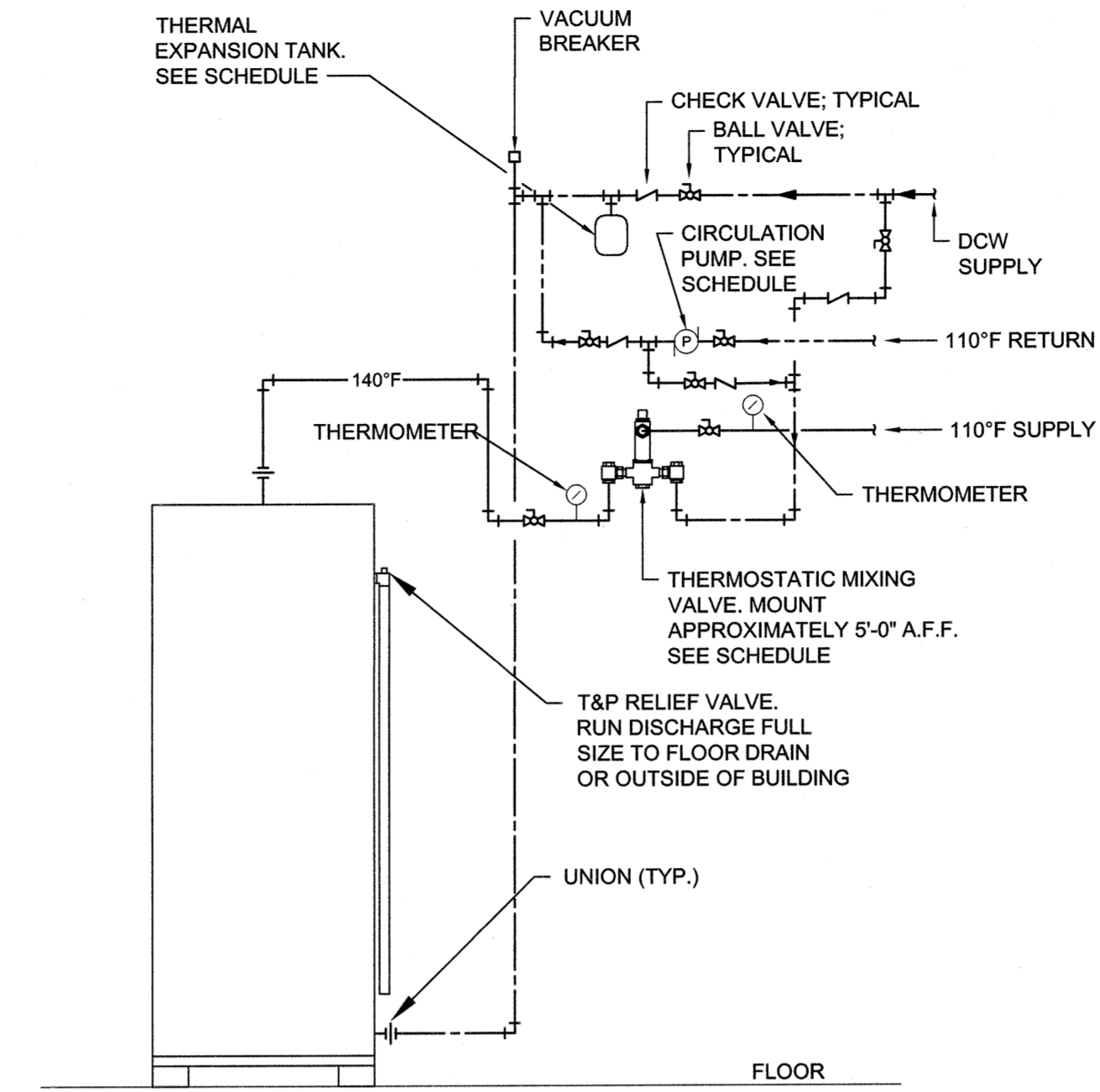


1 WATER SERVICE ENTRANCE DETAIL
NOT TO SCALE

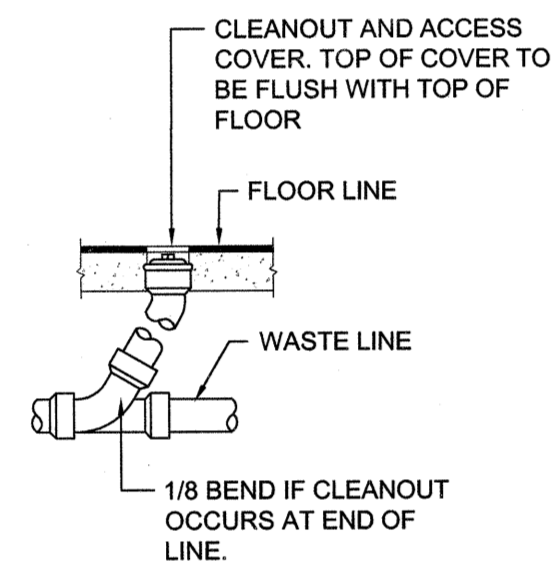


JOSAM NO.	P.D.I. SYMBOL	FIXTURE UNIT RATING	A SIZE
7501-S	A	1-11	1/2
7502-S	B	12-32	3/4
7503-S	C	33-60	1
7504-S	D	61-113	1 1/4
7505-S	E	114-154	1 1/2
7506-S	F	155-330	2

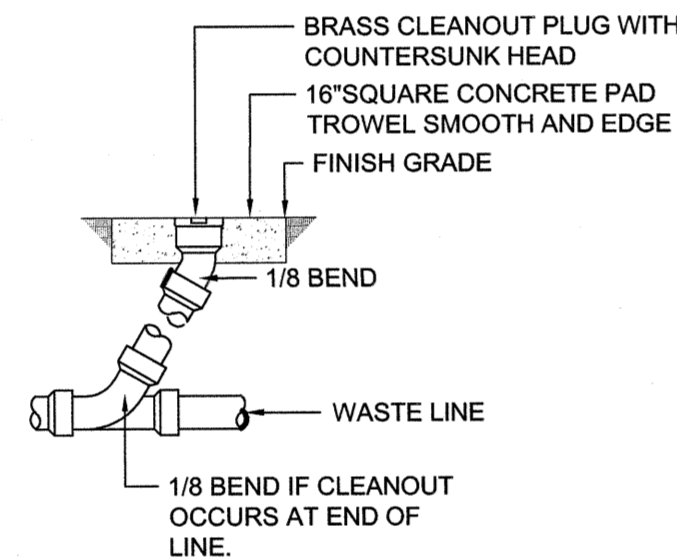
2 WATER HAMMER ARRESTOR DETAIL
NOT TO SCALE



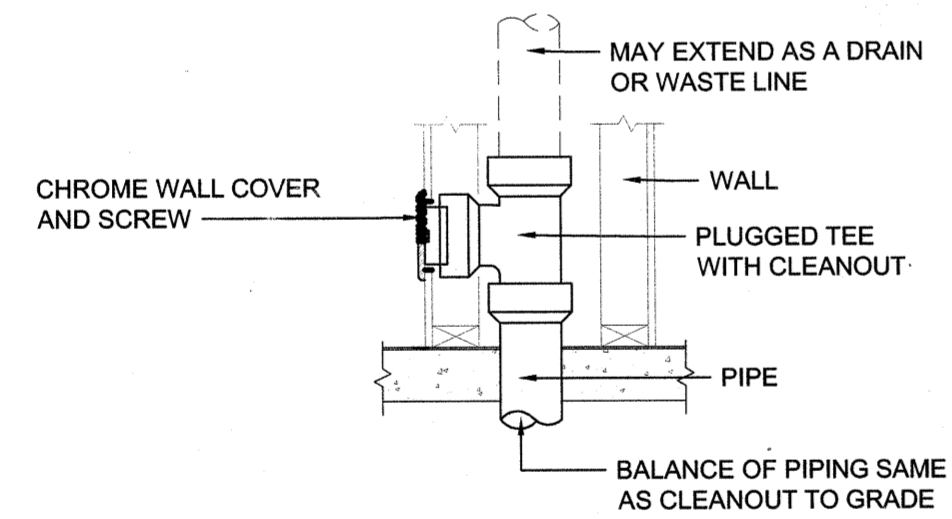
3 WATER HEATER DETAIL
NOT TO SCALE



FLOOR CLEANOUT (FCO)



GRADE CLEANOUT (GCO)



WALL CLEANOUT (WCO)

4 CLEANOUT DETAILS
NOT TO SCALE

SEE DISCLOSURE OF INFORMATION STATEMENT ON SHEET T-1

CBHF Engineers, PLLC 2246 Yeupon Drive Wilmington, NC 28401 Phone: 910.791.4000 Fax: 910.791.5266 www.cbhfengineers.com	SHEET TITLE: PLUMBING DETAILS		P-7
	TALLEY & SMITH ARCHITECTURE INC. P.O. BOX 518 SHELBY, NC 28151-0518 409 EAST MARION ST. SHELBY, NC 28150		
DES. JBS		RENOVATION BLDG. M-104 CAMP LEJEUNE, NORTH CAROLINA	
DR. JBS		DATE	
CHK. TOG		SIZE: F	
SUBMITTED BY:		CODE IDENT. NO. 80091	
DESIGN DIR. T H BURTON, PE		NAVFAC DRAWING NO. 60025134	
APPROVED:		CONST. CONTR. NO. N40085-19-9-0034	
DATE		SPEC. 05-19-0034	
SATISFACTORY TO:		SHEET 36 OF 57	

REVISIONS			
SYM.	DATE	APPROVED	

ABBREVIATIONS			
TERM	ABBREVIATION	TERM	ABBREVIATION
ABOVE FINISHED FLOOR	AFF	INCH OF WATER GAUGE	INWG
ABOVE GROUND	AG	INDOOR UNIT	IDU
ABOVE SEA LEVEL	ASL	IRON PIPE SIZE	IPS
ACROSS THE LINE	ACL	KILOVOLT-AMP	KVA
AIR ADMITTANCE VALVE	AAV	KILOWATT	KW
AIR CONDITIONING (ING. ED)	AIR COND	KILOWATT HOUR	KWH
AIR HANDLING UNIT	AHU OR AH	LEAVING AIR TEMPERATURE	LAT
AIR FLOW MEASURING STATION	AFMA	LEAVING WATER TEMPERATURE	LWT
AMBIENT	AMB	LENGTH	LG
AMPERE (AMP. AMPS)	AMP	LINEAR FEET	LF
ANALOG INPUT	AI	MAXIMUM	MAX
ANALOG OUTPUT	AO	MAXIMUM OVERCURRENT PROTECTION	MOCP
AND	&	MEDIUM-PRESSURE STEAM	MPS
APPARATUS DEW POINT	ADP	MILES PER HOUR	MPH
APPROXIMATE	APPROX	MINIMUM	MIN.
ARCHITECT	ARCH	MINIMUM CIRCUIT AMPERES	MCA
ATMOSPHERE	ATM	MINUTE	MIN
AVERAGE	AVG	MANUFACTURER	MFR
BRAKE HORSEPOWER	BHP	MOTOR CONTROL CENTER	MCC
BROWN & SHARPE WIRE GAGE	B&S	NOISE CRITERIA	NC
BRITISH THERMAL UNIT	BTU	NON-STANDARD PART LOAD	NPLV
BRITISH THERMAL UNIT PER HOUR	BTUH	NORMALLY OPEN	NO
1000 BRITISH THERMAL UNIT	MBH	NORMALLY CLOSED	NC
BUILDING	BLDG	NOT APPLICABLE	N/A
BUILDING AUTOMATION SYSTEM	BAS	NOT IN CONTRACT	N I C
CELSIUS	°C	NOT TO SCALE	NTS
CHILLED WATER RETURN	CHWR	NUMBER	NUMBER
CHILLED WATER SUPPLY	CHWS	ON CENTER	OC
COEFFICIENT, VALVE FLOW	CV	OUNCE	OZ
COEFFICIENT OF PERFORMANCE FACTOR	COP	OUTDOOR UNIT	ODU
COMPRESSOR	COMP	OUTSIDE AIR	OA
CONCRETE	CONC	PACKAGE UNIT	PU
CONDENSER (ER. ING. -ATION)	COND	PACKAGE TERMINAL AIR CONDITIONER	PTAC
CONNECTION	CONN	PARTS PER MILLION	PPM
CONTINUATION	CONT	PERCENT	%
COOLING LOAD	CLG LOAD	PHASE	PH
CUBIC FEET	CU FT	POUNDS	LBS
CUBIC INCH	CU IN	POUNDS PER SQUARE FOOT	PSF
CUBIC FEET PER MINUTE	CFM	POWER VENTILATOR	PV
CFM, STANDARD CONDITIONS	SCFM	PRESSURE	PRESS
DECIBEL	DB	PRESSURE REDUCING VALVE	PRV
DEGREE	DEG OR °	PRESSURE SAFETY VALVE	PSV
DEDICATED OUTDOOR AIR SYSTEM	DOAS	PUMPED CONDENSATE	PC
DEGREES FAHRENHEIT	DEG. F	QUANTITY	QTY
DETAIL	DET	RATED LOAD AMPS	RLA
DEW-POINT TEMPERATURE	DPT	RECIRCULATE	RECIRC
DIAMETER	DIA	REDUCED PRESSURE BACKFLOW PREVENTER	RPZ
DIAMETER, INSIDE	ID	REFRIGERANT (12, 22, ETC.)	R22, R410
DIAMETER, OUTSIDE	OD	REFRIGERANT LIQUID	RL
DIFFERENCE OR DELTA	DIFF	REFRIGERANT SUCTION	RS
DIGITAL INPUT	DI	REQUIRED	REQD OR REQD
DIGITAL OUTPUT	DO	RELATIVE HUMIDITY	RH
DOMESTIC HOT WATER	DHW	RETURN AIR	RA
DOMESTIC HOT WATER RECIRCULATION	DHWR	REVOLUTIONS PER MINUTE	RPM
DRY-BULB TEMPERATURE	DBT	REVOLUTIONS PER SECOND	RPS
DUCTLESS SPLIT SYSTEM AIR HANDLER	DAH	ROOF VENTILATOR	RV
DUCTLESS SPLIT SYSTEM HEAT PUMP	DHP	ROOF TOP UNIT	RTU
ENERGY EFFICIENCY RATING	ERR	SAFETY FACTOR	SF
EFFICIENCY	EFF	SEASONAL ENERGY EFFICIENCY RATIO	SEER
ELECTRIC UNIT HEATER	EUH	SECOND	S
ELEVATION	EL	SHADING COEFFICIENT	SC
ENTERING	ENT	SPECIFICATION	SPEC
ENTERING WATER TEMPERATURE	EWT	SQUARE	SQ
ENTERING AIR TEMPERATURE	EAT	STANDARD	STD
EXISTING	(X)	STATIC PRESSURE	SP
EXTERNAL AMBIENT TEMPERATURE	EAT	SUPPLY	SPLY
EXTERNAL STATIC PRESSURE	ESP	SUPPLY AIR	SA
EXHAUST AIR	EA	TEMPERATURE	TEMP
EXHAUST FAN	EF	TEMPERATURE DIFFERENCE	TD
FACE VELOCITY	FVEL	THERMOSTAT	T STAT
FAHRENHEIT	°F	TONS OF REFRIGERATION	TONS
FEET PER MINUTE	FPM	TO BE DETERMINED	TBD
FEET PER SECOND	FPS	TOP OF STEEL	TOS
FLOOR	FLR	TOTAL DYNAMIC HEAD	TDH
FOOT OR FEET	FT	TYPICAL	TYP
FULL LOAD AMPS	FLA	U-FACTOR	U
GAGE OR GAUGE	GA	UNDER GROUND	UG
GALLONS	GAL	UNLESS OTHERWISE NOTED	UON
GALLONS PER HOUR	GPH	UNIT HEATER - ELECTRIC	UH
GALLONS PER MINUTE	GPM	VARIABLE AIR VOLUME	VAV
GALLONS PER DAY	GPD	VARIABLE FREQUENCY DRIVE	VFD
GAS UNIT HEATER	GUH	VELOCITY	VEL
GRAINS	GR	VENTILATION, VENT	VENT
HEAD	HD	VENT THRU ROOF	VTR
HEAT EXCHANGER	HX	VERTICAL	VERT
HEATING AND VENTILATION UNIT	HV	VOLT	V
HEATING, VENTILATION AND AIR CONDITIONING	HVAC	VOLT AMPERE	VA
HEIGHT	HGT	VOLUME	VOL
HERTZ	HZ	WATER PRESSURE DROP	WPD
HIGH DENSITY POLYPROPYLENE	HDPE	WATER GAUGE	WG
HIGH-PRESSURE STEAM	HPS	WAIT	W
HORSEPOWER, HEAT PUMP	HP	WATT-HOUR	WH
HOT WATER COIL	HWC	WITH	W/
HOUR(S)	HR	WEIGHT	WT
HUMIDITY, RELATIVE	RH	WET BULB	WB
INTEGRATED PART LOAD VALUES	IPLV	YARD	YD
INCH	INL	YEAR	YR

NOTE: ALL ABBREVIATIONS MAY NOT BE USED IN PROJECT.

MECHANICAL LEGEND	
	EMERGENCY SHUTOFF FOR ATFP
	TEMPERATURE SENSOR
	TEMPERATURE/HUMIDITY SENSOR
	DUCT SMOKE DETECTOR
	INDICATES TO DEMOLISH
	GAS METER
	GAS SHUTOFF VALVE
	EXTENT OF DEMOLITION
	POINT OF CONNECTION
	DIFFUSER/REGISTER/GRILLE NO. AS SHOWN ON PLAN AND SCHEDULE
	S.R.T.E.
	AIRFLOW, CFM
AH#	AIR HANDLING UNIT NUMBER
HP#	HEAT PUMP UNIT NUMBER
DOAS#	DEDICATED OUTDOOR AIR SYSTEM UNIT NUMBER
PV#	POWER VENTILATOR NUMBER
EF#	EXHAUST FAN UNIT NUMBER
L#	LOUVER NUMBER
	VOLUME DAMPER

NOTE: ALL ITEMS MAY NOT BE USED IN PROJECT.

MECHANICAL DEMOLITION NOTES	
1.	THE MECHANICAL CONTRACTOR SHALL REVIEW THE DRAWINGS AND SPECIFICATIONS FOR DEMOLITION REQUIREMENTS AND LAYOUT HIS WORK IN A COMPATIBLE AND COMPLEMENTARY MANNER. REMOVE ALL EQUIPMENT, DUCTWORK, SUPPORTS, CONTROLS, ACCESSORIES, ETC., AND MECHANICAL ITEMS MADE OBSOLETE BY THESE ALTERATIONS AS SHOWN IN THE MECHANICAL DRAWINGS. ALL ITEMS TO BE REMOVED OR MODIFIED MAY NOT BE SHOWN, HOWEVER, THIS CONTRACTOR SHALL REMOVE ANY MECHANICAL WORK AS REQUIRED BY THE CONSTRUCTION.
2.	PREPARE A DEMOLITION PLAN AND SUBMIT PROPOSED DEMOLITION, AND REMOVAL PROCEDURES FOR APPROVAL BEFORE WORK IS STARTED. PLAN SHALL BE APPROVED BY CONTRACTING OFFICER PRIOR TO WORK BEGINNING. DO NOT BEGIN DEMOLITION UNTIL AUTHORIZATION IS RECEIVED FROM THE CONTRACTING OFFICER.
3.	BEFORE BEGINNING ANY DEMOLITION WORK, SURVEY THE SITE AND EXAMINE THE DRAWINGS AND SPECIFICATIONS TO DETERMINE THE EXTENT OF THE WORK, RECORD EXISTING CONDITIONS IN THE PRESENCE OF THE CONTRACTING OFFICER SHOWING THE CONDITION OF STRUCTURES AND OTHER FACILITIES ADJACENT TO AREAS OF ALTERATION OR REMOVAL. PHOTOGRAPHS SIZED 4 INCH WILL BE ACCEPTABLE AS A RECORD OF EXISTING CONDITIONS. INCLUDE IN THE RECORD THE ELEVATION OF THE TOP OF FOUNDATION WALLS, FINISH FLOOR ELEVATIONS, POSSIBLE CONFLICTING ELECTRICAL CONDUITS, PLUMBING LINES, ALARMS SYSTEMS, THE LOCATION AND EXTENT OF EXISTING CRACKS AND OTHER DAMAGE AND DESCRIPTION OF SURFACE CONDITIONS THAT EXIST PRIOR TO BEFORE STARTING WORK. IT IS THE CONTRACTOR'S RESPONSIBILITY TO VERIFY AND DOCUMENT ALL REQUIRED OUTAGES WHICH WILL BE REQUIRED DURING THE COURSE OF WORK, AND TO NOTE THESE OUTAGES ON THE RECORD DOCUMENT. SUBMIT SURVEY RESULTS.
4.	EXCEPT FOR SALVAGED ITEMS, AND FOR MATERIALS OR EQUIPMENT SCHEDULED FOR SALVAGE, ALL MATERIALS AND EQUIPMENT REMOVED AND NOT REUSED OR SALVAGED, SHALL BECOME THE PROPERTY OF THE CONTRACTOR AND SHALL BE REMOVED FROM GOVERNMENT PROPERTY. TITLE TO MATERIALS RESULTING FROM DEMOLITION AND DECONSTRUCTION, AND MATERIALS AND EQUIPMENT TO BE REMOVED, IS VESTED IN THE CONTRACTOR UPON APPROVAL BY THE CONTRACTING OFFICER OF THE CONTRACTOR'S DEMOLITION, DECONSTRUCTION, AND REMOVAL PROCEDURES, AND AUTHORIZATION BY THE CONTRACTING OFFICER TO BEGIN DEMOLITION AND DECONSTRUCTION. THE GOVERNMENT WILL NOT BE RESPONSIBLE FOR THE CONDITION OR LOSS OF, OR DAMAGE TO, SUCH PROPERTY AFTER CONTRACT AWARD. SHOWING FOR SALE OR SELLING MATERIALS AND EQUIPMENT ON SITE IS PROHIBITED.
5.	THESE DRAWINGS ARE COMPILED BY THE ENGINEER FROM THE OWNER'S RECORD DRAWINGS AND LIMITED FIELD VERIFICATION OF EXISTING CONDITIONS FOR THE PURPOSE OF INDICATING THE WORK REQUIRED AND ARE BELIEVED TO BE CORRECT. NOTWITHSTANDING, THE CONTRACTOR SHALL VERIFY ALL DUCTWORK, EQUIPMENT LOCATIONS, DIMENSIONS AND ALL FIELD CONDITIONS AFFECTING HIS WORK.
6.	WHERE MECHANICAL SYSTEMS PASS THROUGH THE DEMOLITION AREAS TO SERVE OTHER PORTIONS OF THE PREMISES, THEY SHALL REMAIN OR BE SUITABLY RELOCATED AND THE SYSTEM RESTORED TO NORMAL OPERATION. ADVISE THE CONTRACTING OFFICER IMMEDIATELY IF SUCH CONDITIONS ARE UNCOVERED BEFORE PROCEEDING WITH ADDITIONAL WORK.
7.	DO NOT INTERRUPT EXISTING UTILITIES SERVING OCCUPIED OR USED FACILITIES, EXCEPT WHEN AUTHORIZED IN WRITING BY THE CONTRACTING OFFICER. DO NOT INTERRUPT EXISTING UTILITIES SERVING FACILITIES OCCUPIED AND USED BY THE GOVERNMENT EXCEPT WHEN APPROVED IN WRITING AND THEN ONLY AFTER TEMPORARY UTILITY SERVICES HAVE BEEN APPROVED AND PROVIDED. DO NOT BEGIN DEMOLITION OR DECONSTRUCTION WORK UNTIL ALL UTILITY DISCONNECTIONS HAVE BEEN MADE SHUT OFF AND CAP UTILITIES FOR FUTURE USE, AS INDICATED. TEMPORARY SERVICES INCLUDING BUILDING HEAT AND HEATING OF DOMESTIC WATER SHALL BE REQUIRED WHEN ANY INTERRUPTION OF SUCH SERVICES EXCEEDS 12 HOURS EXCEPT WHEN AUTHORIZED IN WRITING BY THE CONTRACTOR OFFICER.

MECHANICAL GENERAL NOTES	
1.	SCOPE OF WORK: THESE DRAWINGS AND ACCOMPANYING SPECIFICATIONS DESCRIBE THE SCOPE OF WORK REQUIRED FOR PROJECT MECHANICAL HEATING, VENTILATING AND AIR CONDITIONING SYSTEMS. CONTRACTOR SHALL PROVIDE ALL LABOR AND MATERIAL, REQUIRED FOR COMPLETE, FULLY FUNCTIONING MECHANICAL SYSTEMS COMPLYING WITH THE INTENT OF THE DRAWINGS AND SPECIFICATIONS.
2.	DRAWINGS: DRAWINGS ARE DIAGRAMMATIC AND MAY NOT COMPLETELY DESCRIBE EVERY DETAIL OF THE INSTALLATION; HOWEVER, CONTRACTOR IS RESPONSIBLE FOR FURNISHING COMPLETE SYSTEMS INCLUDING ALL REQUIRED EQUIPMENT AND ACCESSORIES TO OBTAIN FULLY FUNCTIONING HVAC SYSTEMS.
3.	MANUFACTURER'S RECOMMENDATIONS - INSTALL ALL EQUIPMENT IN STRICT ACCORDANCE WITH MANUFACTURER'S RECOMMENDATIONS.
4.	WORKMANSHIP - UTILIZE SKILLED MECHANICS TO OBTAIN A HIGH QUALITY PROFESSIONAL FINISH INSTALLATION WHEN COMPLETED. WORK OF UNACCEPTABLE QUALITY SHALL BE REMOVED AND REWORKED AT NO ADDITIONAL COST. CONTRACTING OFFICER SHALL BE THE JUDGE OF WORKMANSHIP AND THEIR OPINION WILL BE FINAL. IN ADDITION, ANY EXISTING CONSTRUCTION DAMAGED BY THE CONTRACTOR SHALL BE REPAIRED OR REPLACED TO THE SATISFACTION OF THE CONTRACTING OFFICER BY THE CONTRACTOR AT NO ADDITIONAL COST.
5.	SUPERVISION: PROVIDE SKILLED SUPERINTENDENTS TO SUPERVISE THE WORK FROM THE BEGINNING TO COMPLETION AND FINAL INSPECTION.
6.	PROGRESS OF WORK: PERFORM WORK IN ACCORDANCE WITH SCHEDULE AND REQUIREMENTS OF THE OWNER. UNDER NO CIRCUMSTANCES SHALL THIS CONTRACTOR DELAY THE OVERALL PROJECT SCHEDULE.
7.	COORDINATION: COORDINATE MECHANICAL WORK WITH THE WORK OF OTHER TRADES. LOCATIONS SHOWN ON THE DRAWINGS ARE APPROXIMATE UNLESS SPECIFICALLY DIMENSIONED. LAYOUT MECHANICAL WORK SO AS NOT TO INTERFERE WITH THE WORK OF OTHER TRADES. VERIFY ACTUAL BUILDING STRUCTURE PRIOR TO DUCT FABRICATION AND ADJUST ARRANGEMENT AS REQUIRED. INCLUDE ALL OFFSETS IN DUCTS, FITTINGS, PIPING, ETC. AS REQUIRED TO PROPERLY INSTALL EQUIPMENT.
8.	EQUIPMENT LOCATIONS: DETERMINE EXACT EQUIPMENT AND MATERIALS LOCATIONS TO PROVIDE BEST ARRANGEMENT AND TO FACILITATE PROPER MAINTENANCE AND SERVICING OF EQUIPMENT.
9.	LISTING AND LABELING: ALL EQUIPMENT SHALL BE LABELED OR LISTED BY UL OR OTHER APPROVED TESTING AGENCY WHERE REQUIRED.
10.	CLEANUP: REMOVE ALL DEBRIS GENERATED IN THE ACCOMPLISHMENT OF WORK UNDER THIS PROJECT. CLEAN, REPLACE OR REPAIR ALL SURFACES SOILED OR DAMAGED DURING THE COURSE OF THE WORK. REMOVE DEBRIS DAILY SO TO MAINTAIN SAFE WORKING CONDITIONS.
11.	DEMOLISH EXISTING EQUIPMENT PADS AS REQUIRED TO ACCOMMODATE NEW EQUIPMENT LAYOUT.

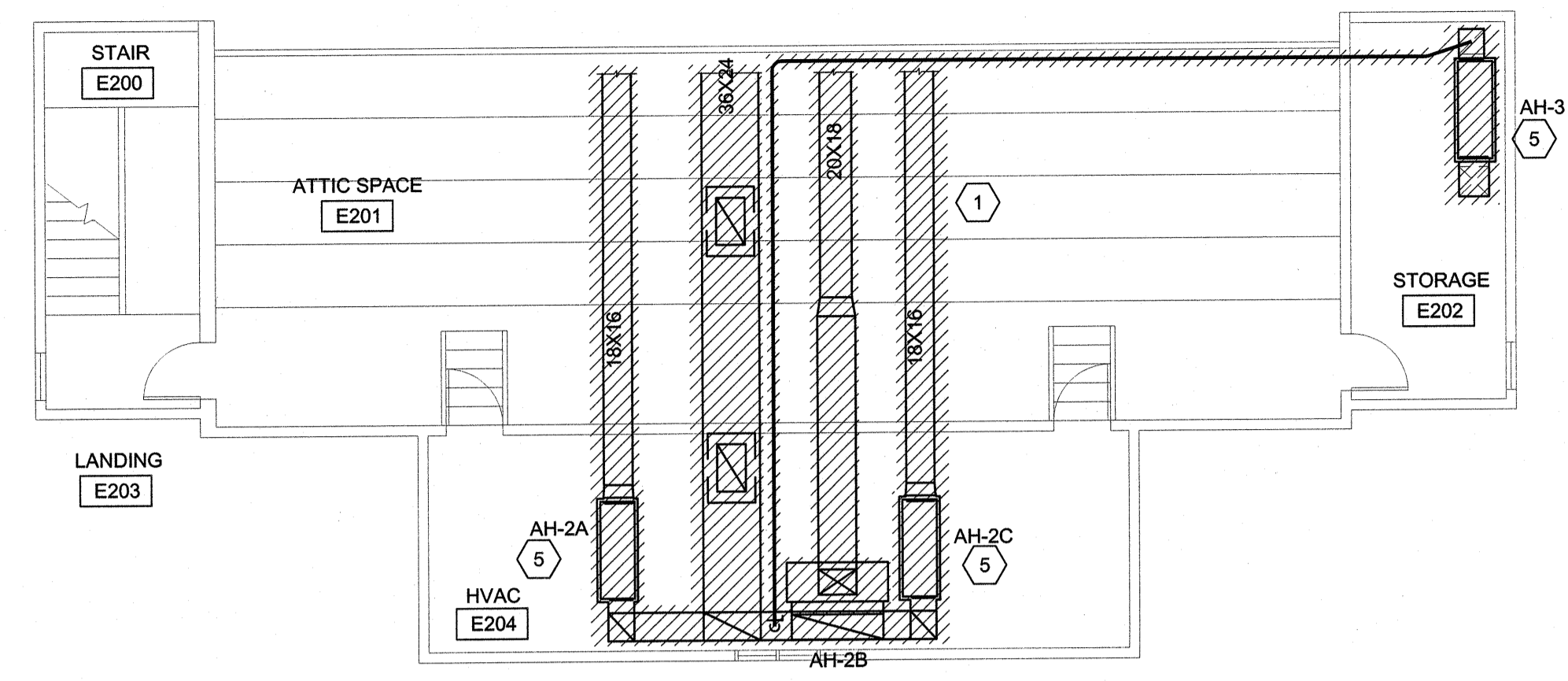
SEE DISCLOSURE OF INFORMATION STATEMENT ON SHEET T-1

 2248 Vauxton Drive Wilmington, NC 28401 Phone: 910.791.4000 Fax: 910.791.5266 www.cbhfengineers.com	SHEET TITLE: MECHANICAL NOTES, ABBREVIATIONS AND LEGEND		M-1
	TALLEY & SMITH ARCHITECTURE INC. P.O. BOX 518 SHELBY, NC 28151-0518 409 EAST MARION ST. SHELBY, NC 28150		
	DES. WTB DR. WTB CHK. TOG SUBMITTED BY:		DEPARTMENT OF THE NAVY MARINE CORPS BASE CAMP LEJEUNE, NORTH CAROLINA RENOVATION BLDG. M-104 CAMP LEJEUNE, NORTH CAROLINA
	DESIGN DR. T.H. BURTON, PE APPROVED:		
SATISFACTORY TO:		DATE:	SIZE: F CODE IDENT. NO.: 80091 NAVAC DRAWING NO.: 60025135 CONST. CONTR. NO. N40085-19-9-0034 SCALE: NOTED SPEC: 05-19-0034 SHEET 37 OF 57

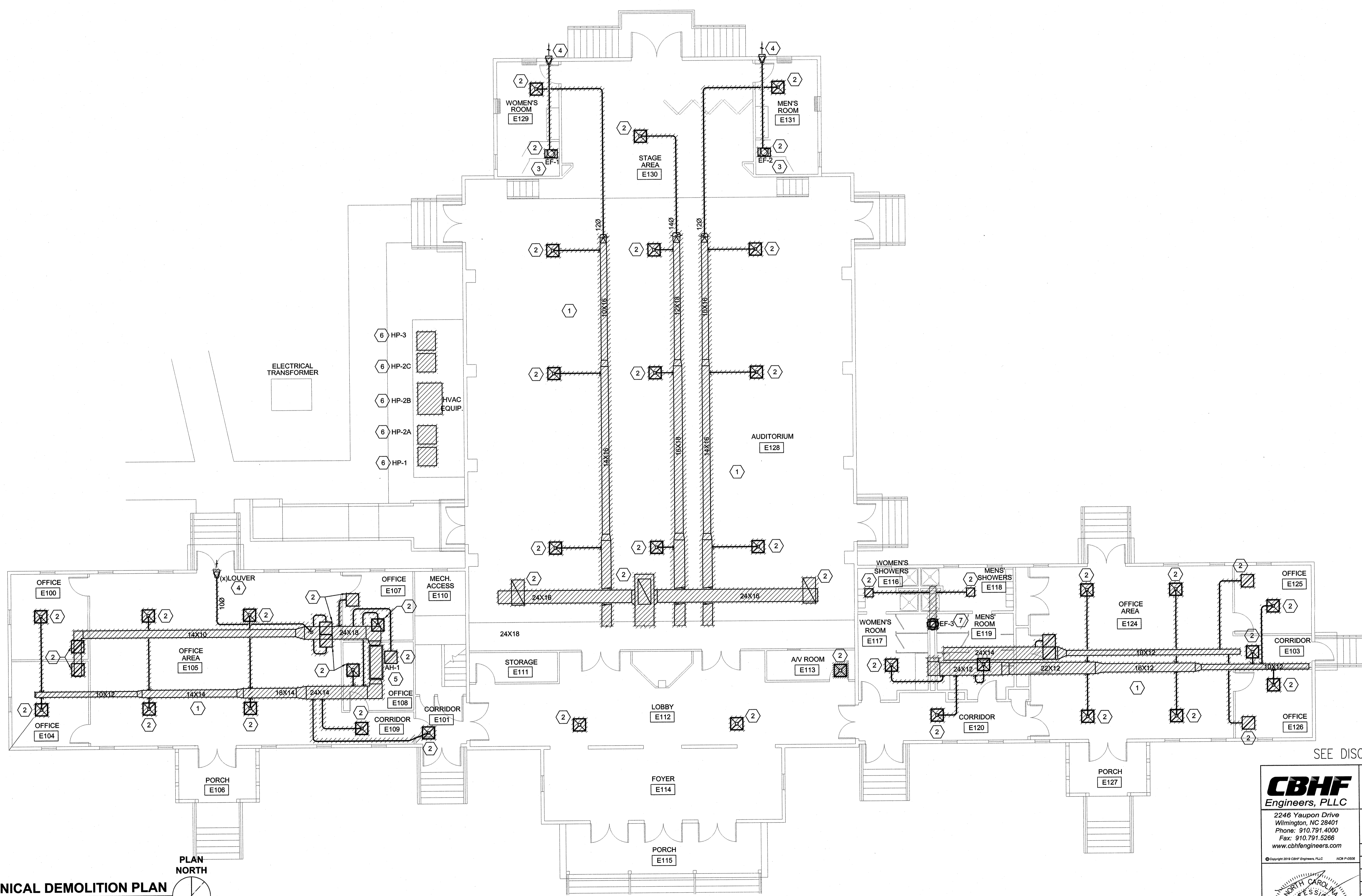
REVISIONS		
SYM.	DATE	APPROVED

MECHANICAL DEMOLITION KEYED NOTES

- 1 REMOVE AND DISPOSE OF EXISTING DUCT.
- 2 REMOVE AND DISPOSE OF EXISTING DIFFUSERS.
- 3 REMOVE AND DISPOSE OF EXISTING EXHAUST FANS.
- 4 REMOVE AND DISPOSE OF EXISTING EXHAUST LOUVER.
- 5 REMOVE AND DISPOSE OF THE HVAC SYSTEM IN ITS ENTIRETY, INCLUDING BUT NOT LIMITED TO, EQUIPMENT, DUCTWORK, INSULATION, FLEXIBLE DUCTWORK, AIR DISTRIBUTION, LOUVERS, HANGERS, SUPPORTS AND CONTROLS.
- 6 REMOVE AND DISPOSE OF ALL CONDENSING UNITS, REFRIGERANT PIPING, CONTROLS.
- 7 REMOVE AND DISPOSE OF EXISTING EXHAUST FAN AND ROOF HOOD, INCLUDING, BUT NOT LIMITED TO, DUCTWORK, HANGERS, INSULATION, CONTROLS AND ETC.



2 MECHANICAL MEZZANINE DEMOLITION PLAN
1/8" = 1'-0"



1 MECHANICAL DEMOLITION PLAN
NOT TO SCALE

SEE DISCLOSURE OF INFORMATION STATEMENT ON SHEET T-1

CBHF Engineers, PLLC 2246 Yaupon Drive Wilmington, NC 28401 Phone: 910.791.4000 Fax: 910.791.5286 www.cbhfengineers.com	SHEET TITLE: MECHANICAL DEMOLITION PLAN	M-2
	TALLEY & SMITH ARCHITECTURE INC. P.O. BOX 518 SHELBY, NC 28151-0518 409 EAST MARION ST. SHELBY, NC 28150	DEPARTMENT OF THE NAVY MARINE CORPS BASE CAMP LEJEUNE, NORTH CAROLINA
DES. WTG DR. WTG CHK. TOG SUBMITTED BY: DESIGN DR. T H BURTON, PE	RENOVATION BLDG. M-104 CAMP LEJEUNE, NORTH CAROLINA	
APPROVED: 	DATE: F 80091	NAVFAC DRAWING NO. 60025136 CONST. CONTR. NO. N40085-19-B-0034
SATISFACTORY TO:	DATE:	SCALE: NOTED SPEC: 05-19-0034 SHEET 38 OF 57